

FIRST FLOOR PLAN

Hawthorn 79

5 cars 3.5 carports 2 sofas 2 chairs

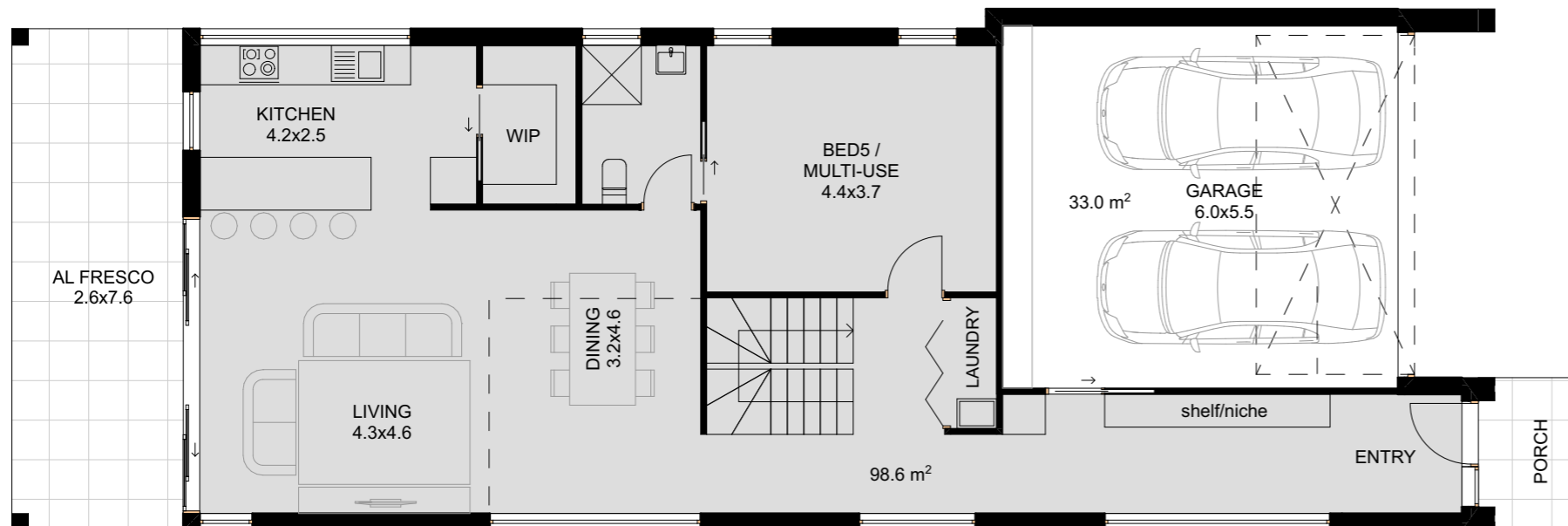
overall width 7.9 m
overall length 22.5 m

internal area 189.9 m²
garage 33 m²
porch 3.1 m²
alfresco 19.8 m²
TOTAL 245.8 m²



features

- double garage
- guest bedroom on ground floor
- kitchen with breakfast bench
- walk in pantry
- alfresco
- study room
- walk in robe
- double height void over living room



GROUND FLOOR PLAN

Standard floorplan and specification shown. Floorplan may not reflect developer guidelines.